



Dave Romesburg <dromesburg@gmail.com>

#27 Castle View from November 9th 2005 am

1 message

Dave J Romesburg <dromesburg@gmail.com>**Wed, Nov 9, 2005 at 6:55 AM**

To: kgz@heartlandonline.com

Please see that Craig receives these pictures. I'd like someone to email back or to call to confirm these pictures were received..

Craig here are new pictures from this morning since it rained a little around 3 or 4am this morning.. Since I have to still get up to move towels to our front door, I took these shortly after..

Notice pictures 151 - 153 - the bottom of the blocks are now getting darker lines which indicates to me water is stil either coming in from the bottom up or water or I think the french drains might be clogged. If you look at the pictures the line goes almost the entire way across the basement wall..

Picture 149 and 150 is now around the corner of the far basement wall. It didn't rain heavy and this basically almost looks the same as before the J channel and vapor barrier were corrected...

Thanks
Dave Romesburg
cell 412-977-9965

You have been sent 12 pictures.

DSCN0149.JPG
DSCN0150.JPG
DSCN0151.JPG
DSCN0152.JPG
DSCN0153.JPG
DSCN0154.JPG
DSCN0155.JPG
DSCN0156.JPG
DSCN0157.JPG
DSCN0158.JPG
DSCN0159.JPG
DSCN0160.JPG

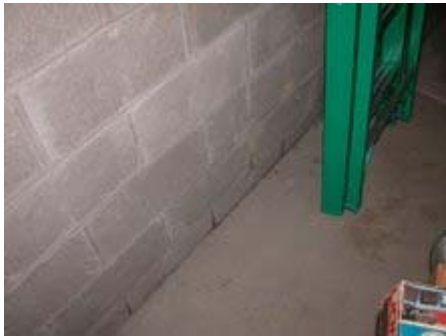
12 attachments



DSCN0149.JPG
33K



DSCN0150.JPG
29K



DSCN0151.JPG
32K



DSCN0152.JPG
32K

DSCN0153.JPG
33K



DSCN0154.JPG
31K



DSCN0155.JPG
30K



DSCN0156.JPG
33K

DSCN0157.JPG
36K



DSCN0158.JPG
29K



DSCN0159.JPG
36K



DSCN0160.JPG
38K
